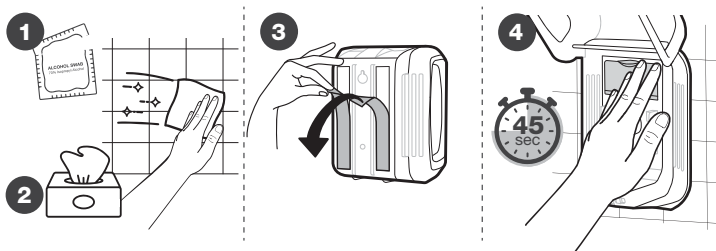


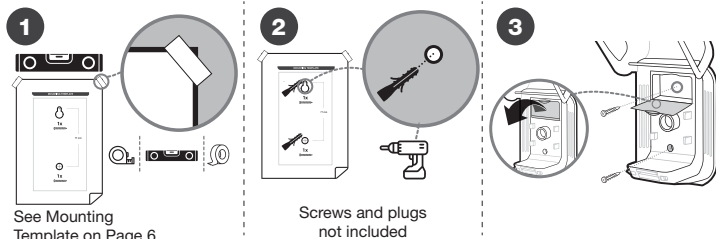
INSTALLATION INSTRUCTIONS - STANDARD DISPENSER

WALL MOUNTING THE STANDARD DISPENSER

OPTION-1

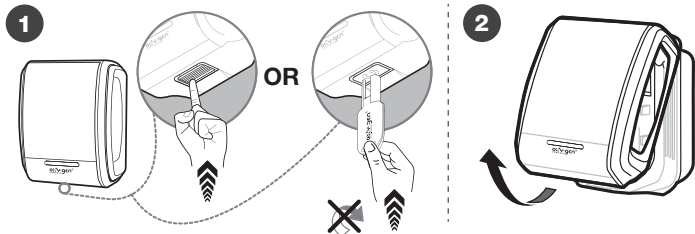


OPTION-2

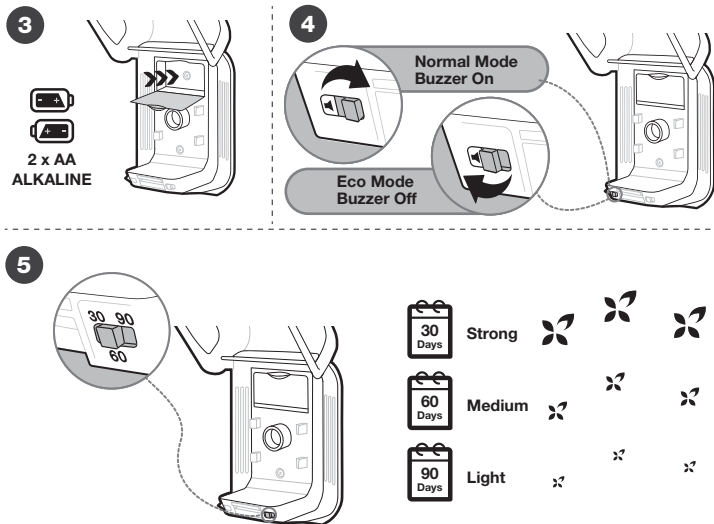


Please make sure that the dispenser is installed/mounted in an upright position before inserting the cartridge to ensure proper functioning.

OPENING THE DISPENSER



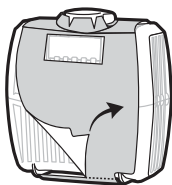
SETTING UP THE DISPENSER



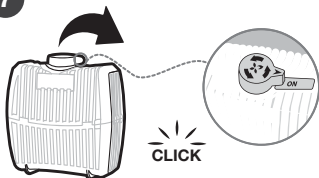
Select the required 30/60/90 days setting.

INSTALLING THE CARTRIDGE

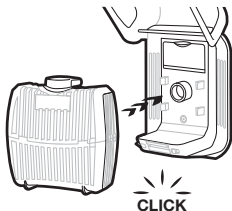
6



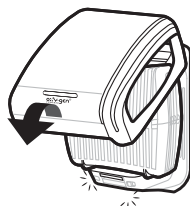
7



8



9

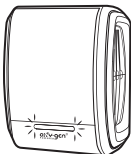


DISPENSER ALERT SETTINGS

Use the Normal-Eco Mode switch to change the dispenser from Normal Mode to Eco Mode. A dispenser operating in the Eco Mode offers considerable battery savings by disabling the light and buzzer alerts during the cartridge cycle.

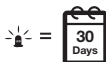
GREEN LIGHT- SUCCESSFUL INSTALLATION

NORMAL MODE



Green light flashing for the first 2 minutes after cartridge installation indicates proper installation. After initial 2 mins it will flash every 5 mins

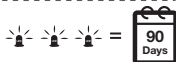
1 flashing light indicates a 1 month (30 days) setting.



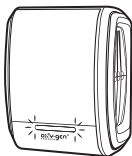
2 flashing lights indicate a 2 month (60 days) setting.



3 flashing lights indicate a 3 month (90 days) setting.

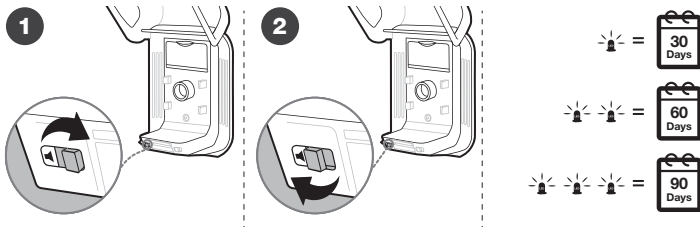


ECO MODE



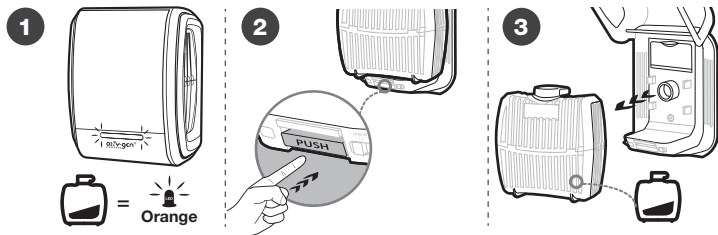
Green light flashing for the first 2 minutes after cartridge installation indicates proper installation. There will be no lights after initial installation till a cartridge or battery change is required.

To check if the dispenser is functioning properly, the Normal-Eco Mode Switch can be toggled by moving the switch to Normal Mode and then bringing it back to the Eco Mode position.

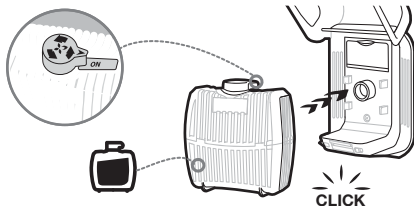


ORANGE LIGHT- REPLACE CARTRIDGE

Orange light flashing indicates that the cartridge is empty. Replace immediately.



4

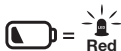
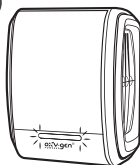


In the **Normal Mode** if the cartridge is not replaced within 7 days, the buzzer activates and will beep every 30 seconds. There is no buzzer in **Eco Mode**.

RED LIGHT-REPLACE BATTERIES

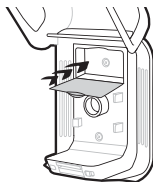
Red light flashing indicates that the batteries need to be replaced.

1



2

2 x AA
Alkaline



- > Dispenser can be mounted at any height
- > Recommended height 1.5 m / 4.5 ft from the ground
- > One dispenser covers an area of up to 6000 cu. ft.
- > Use only AA Alkaline batteries

For professional use.

MADE IN UAE



Scan QR code to watch the
cartridge installation video
<https://bit.ly/3PCnD2d>

The paper for this Installation Instructions Manual is:

- Made of 100% recycled fibre
- Manufactured respecting the most demanding environmental certification
- Manufactured with low energy consumption, water and CO2 emissions compared to the manufacture of virgin fibre papers.



MOUNTING TEMPLATE



1x



77 mm



1x

